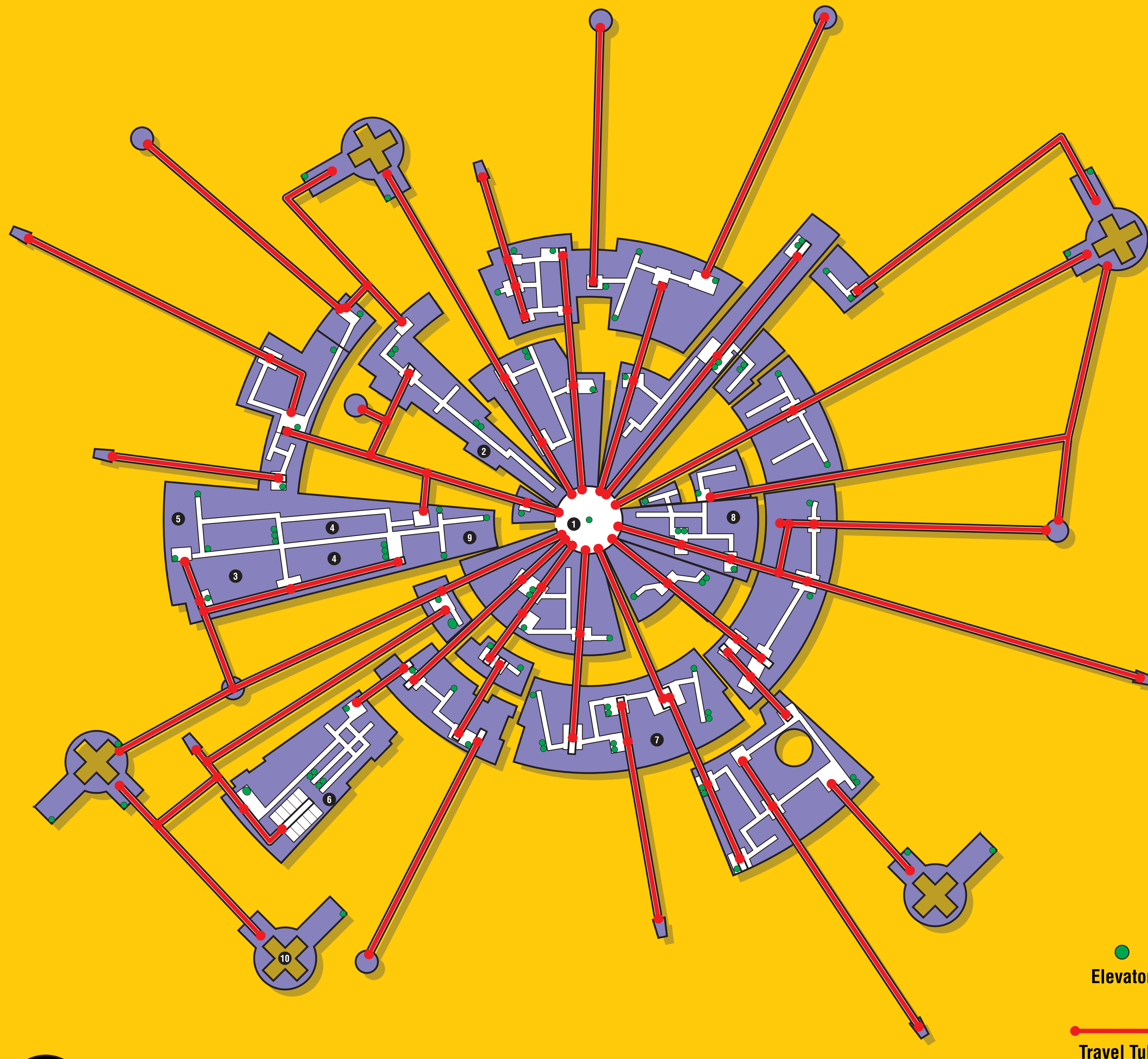


# MOONBASE ALPHA

## Level H



1. Travel Tube Terminal
2. Medical Experimentation
3. Food Preparation Labs
4. Dining Areas
5. Storage Facility
6. Travel Tube Repair Depot
7. Double and Triple Quarters
8. Bio/Chem Labs
9. Chapel
10. Launch Pad Lift Shaft

### MOONBASE ALPHA: A BRIEF HISTORY (Part one)

Moonbase Alpha is perhaps the greatest peace-time achievement in the history of mankind. If, at some point, the abandoned Moonbase is found and explored by a team of alien archeologists, they will have an example of the finest work of the human race available for study. This small, self-contained world is filled with the latest advancements in the fields of Engineering, Architecture, Astronomy, Mass Transportation, Physics, and the Arts. Located in the crater Plato, just above the Sea of Showers on what was once called the "nearside of the Moon," Alpha is a marvel of modern engineering. Constructed out of quarried rock and ores, Moonbase is 4 kilometers (212 miles) in diameter and extends up to 1 kilometer (.6 miles) in areas below the lunar surface. The operation of Moonbase is controlled from Main Mission Tower, located at the hub of the wheel-shaped base. In emergency situations, Moonbase can be operated from the Command Center, located directly beneath Main Mission on Alpha's lowest construction level. Originally, the base was designed to serve as both a deep space exploration station and a monitoring station for the nuclear waste areas on the Moon's farside. Construction began on the 3rd of February, 1983, but was briefly halted during the 1987 thermonuclear war. However, the war created a worldwide recognition of the potential for global disaster, dramatizing the need for mankind to work together on this great project.



LEVEL H is the section of Moonbase Alpha that rests on the lunar surface. it provides access to Moonbase Alpha's major Travel Tube System. every segment of the base can be reached by the services on this level.

100 meters